

vtech[®]
Baby

User's Manual

Little Friendlies Sleeping Stars Mobile



© 2015 VTech
Printed in China
91-003057-007^(K)

VTech understands that a child's needs and abilities change as they grow and with that in mind we develop our toys to teach and entertain at just the right level...

vtech Baby

Toys that will stimulate their interest in different textures, sounds and colours

I am...

...responding to colours, sounds and textures

...understanding cause and effect

...learning to touch, reach, grasp, sit-up, crawl and toddle

Birth-36 months



Pre-School

Interactive toys to develop their imagination and encourage language development

I want...

...to get ready for school by starting to learn the alphabet and counting

...my learning to be as fun, easy and exciting as can be

...to show my creativity with drawing and music so my whole brain develops

3-6 years



Electronic Learning Computers

Cool, aspirational and inspiring computers for curriculum related learning

I need...

...challenging activities that can keep pace with my growing mind

...intelligent technology that adapts to my level of learning

...National Curriculum based content to support what I'm learning at school

4-10 years

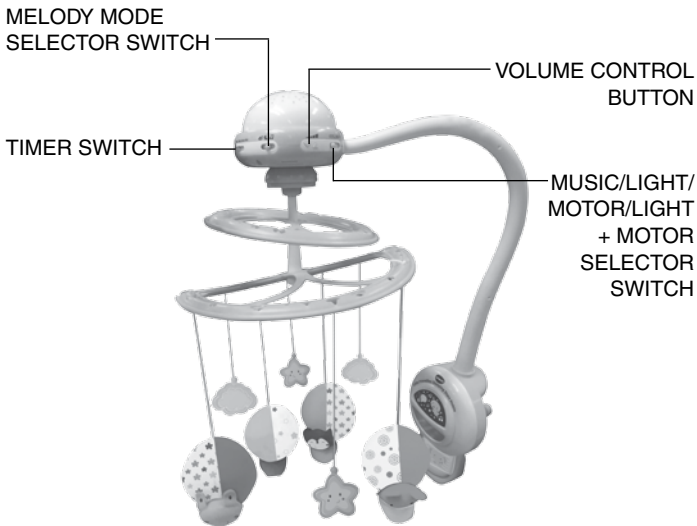


To learn more about this and other VTech® products, visit www.vtech.co.uk

INTRODUCTION

Thank you for purchasing the **VTech® Little Friendlies Sleeping Stars Mobile** learning toy!

Soothe your baby to sleep with the **Little Friendlies Sleeping Stars Mobile** by **VTech®**. Watch the spinning animals and magical light patterns as calming sounds, music and songs lull baby to sleep.



INCLUDED IN THIS PACKAGE

- One VTech® Little Friendlies Sleeping Stars Mobile
- One User's Manual

WARNING:

All packing materials, such as tape, plastic sheets, packaging locks and tags are not part of this toy, and should be discarded for your child's safety.

NOTE:

Please keep user's manual as it contains important information.

WARNINGS:

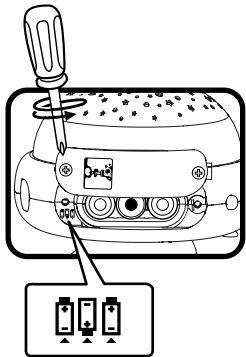
Adult assembly required. This package contains four screws. For your child's safety, do not let your child play with the toy until it is fully assembled.

To prevent possible injury by entanglement, remove this toy when the child starts trying to get up on its hands and knees in a crawling position.

GETTING STARTED

BATTERY INSTALLATION

1. Make sure the unit is turned **OFF**.
2. Locate the battery cover on the bottom of the unit. Use a coin or a screwdriver to loosen the screw.
3. Install 3 new AA batteries following the diagram inside the battery box. (The use of new alkaline batteries is recommended for maximum performance.)
4. Replace the battery cover and tighten the screw to secure.



BATTERY NOTICE

- Use new alkaline batteries for maximum performance.
- Use only batteries of the same or equivalent type as recommended.
- Do not mix different types of batteries: alkaline, standard (carbon-zinc) or rechargeable (Ni-Cd, Ni-MH), or new and used batteries.
- Insert batteries with the correct polarity.
- Do not short-circuit the battery terminals.
- Remove exhausted batteries from the toy.
- Remove batteries during long periods of non-use.
- Do not dispose of batteries in fire.
- Do not charge non-rechargeable batteries.
- Remove rechargeable batteries from the toy before charging (if removable).
- Rechargeable batteries are only to be charged under adult supervision.

Disposal of batteries and product



The crossed-out wheeie bin symbols on products and batteries, or on their respective packaging, indicates they must not be disposed of in domestic waste as they contain substances that can be damaging to the environment and human health.

The chemical symbols Hg, Cd or Pb, where marked, indicate that the battery contains more than the specified value of mercury (Hg), cadmium (Cd) or lead (Pb) set out in Battery Directive (2006/66/EC).



The solid bar indicates that the product was placed on the market after 13th August, 2005.

Help protect the environment by disposing of your product or batteries responsibly.

For more information, please visit:
www.recycle-more.co.uk
www.recyclenow.com

PRODUCT FEATURES

1. TIMER SWITCH

To turn the unit **ON**, slide the **TIMER SWITCH** to the **10mins/20mins/30mins** position. To turn the unit **OFF**, slide the **TIMER SWITCH** to the **OFF (●)** position.



2. MUSIC/LIGHT/MOTOR/LIGHT + MOTOR SWITCH

Slide the **Music/Light/Motor/Light + Motor Switch** to the **Music** position to turn off the light and motor. Slide the **Music/Light/Motor/Light + Motor Switch** to the **Light** position to turn the light on. Slide the **Music/Light/Motor/Light + Motor Switch** to the **Motor** position to turn the motor on to activate the animals turn around in one direction. Slide the **Music/Light/Motor/Light + Motor Switch** to the **Light + Motor** position to turn the light and motor on.



3. VOLUME CONTROL

Press the (▼▲) **Volume control button** to select the volume required.



4. NATURE SOUND/LULLABY/ SOOTHING MELODY MODE SWITCH

Slide the **Nature Sound/Lullaby/Soothing Melody Mode Switch** to the **Nature Sound Mode** position to hear combinations of nature sounds. The light pattern will fade in and fade out slowly with the sounds.

Slide the **Nature Sound/Lullaby/Soothing Melody Mode Switch** to the **Lullaby Mode** position to hear 4 soothing songs and 20 soft melodies jammed with nature sound effects. The light pattern will fade in and fade out slowly with the sounds.

Slide the **Nature Sound/Lullaby/Soothing Melody Mode Switch** to the **Soothing Melody Mode** position to hear 30 soft melodies. The light pattern will fade in and fade out slowly with the sounds.



5. SOUND SENSOR

When the unit is in sleep mode nature sounds or soft melodies will be activated when sound is detected.



6. AUTOMATIC SHUT-OFF

To preserve battery life, the **VTech® Little Friendlies Sleeping Stars Mobile** will automatically power down after the time selected. The unit can be reactivated by pressing any button or when baby cries.

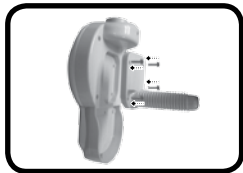
ACTIVITIES

1. Slide the **OFF/TIMER SWITCH** to turn the unit on. You will hear the nature sounds or a soothing song or soft melodies with nature sounds according to the selected mode. The light will fade in and fade out slowly with the sounds.
2. Slide the **Nature Sound/Lullaby/Soothing Melody Mode Switch** to the **Nature Sound Mode** to hear combination of nature sounds. The light pattern will fade in and fade out slowly with the sounds. Slide the **Nature Sound/Lullaby/Soothing Melody Mode Switch** to the **Lullaby Mode** to hear 4 soothing songs and 20 soft melodies jammed with nature sound effect. The light pattern will fade in and fade out slowly with the sounds. Slide the **Nature Sound/Lullaby/Soothing Melody Mode Switch** to the **Soothing Melody Mode** to hear 30 soft melodies. The light pattern will fade in and fade out slowly with the sounds.

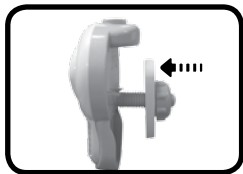


ASSEMBLY INSTRUCTIONS

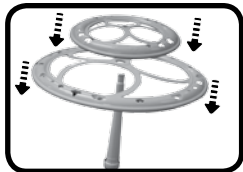
1. Tighten the screws to secure the base cover.



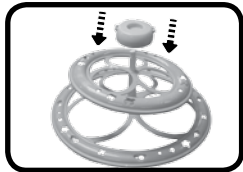
2. Attach and tighten the base to the cot using the chunky screw.



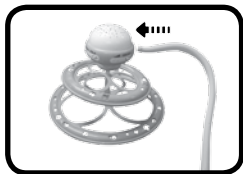
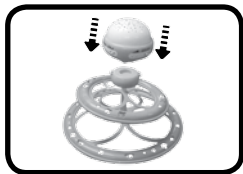
3. Taking the mobile pin first insert through the large ring so it sits in the lower pin groove. secondly add the smaller ring so it sits in the middle pin groove.



4. Insert the mobile pin into the bottom of the projector base lock.



5. Insert the projector base lock into the main projector unit by pressing the two side buttons until you hear a click sound.
6. Press the button at the top of the mobile support post and insert into the projector main unit. Release the button and you will hear a click sound.
7. Insert the bottom of the mobile support post into the base. You will hear a click when the post is inserted correctly.



SUNG SONG LYRICS

SONG 1

Good night, baby.
Good night, baby.
Good night, baby.
It's time to go to bed.
Merrily, we roll along, roll along, roll along.
Merrily, we roll along.
As off to bed we go.

SONG 2

Twinkle, twinkle, little star.
How I wonder what you are.
Up above the world so high,
Like a diamond in the sky,
Twinkle, twinkle, little star.
How I wonder what you are.

SONG 3

Row, row, row, your boat
gently down the stream.
Merrily, merrily, merrily, merrily
life is but a dream.

SONG 4

The stars are out.
The moon is up.
It's time to go to bed
I'm so glad you have a place
to lay your little head.
Have a deep and peaceful sleep.
Dream away the hours.

MELODY LIST:

1. Are You Sleeping
2. Oh Dear, What can the Matter Be?
3. Pachebel's Canon in D
4. Cradle Song (Mozart)
5. Moonlight Sonata
6. Au Clair du la Lune
7. Beautiful Dreamer
8. Brahms Lullaby
9. Dodo l'enfant do
10. Four seasons - Spring 1st movement
11. Greensleeves

12. All through the night
13. Air for a G string (Bach)
14. Mendelssohn - spring song
15. Fais dodo
16. Hush Little Baby
17. Irish Lullaby
18. Schumann Almostto
19. Ring around the rosy
20. Mozart Pianoson
21. Lavender's Blue
22. Sur le pont d'Avignon
23. Water Music No 1 in F Bourree (Handel)
24. Fur Elise
25. Morning (Peer Gynt suite, Grieg)
26. Ode to Joy
27. Frere Jacque
28. Pease Pudding
29. Schumann Distanti
30. Hey Diddle Diddle
31. Dance of the Reed Flutes
32. Home Sweet Home
33. Little Bo Peep
34. Alouette
35. Baa Baa Black Sheep
36. Row, Row, Row your boat
37. Mary had a Little Lamb
38. Old Macdonald
39. New World Symphony (Dvorak)
40. To a Wild Rose (Macdowell)
41. Elude 3 (Liszt)
42. Diddle Diddle Dumpling
43. It's Raining, It's Pouring
44. Little Boy Blue
45. Mary, Mary Quite Contrary

46. My Bonnie Lies Over the Ocean
47. Old King Cole
48. Old Grey Mare
49. Sing a Song of Sixpence
50. Toyland

CARE & MAINTENANCE

1. Keep the unit clean by wiping it with a slightly damp cloth.
2. Keep the unit out of direct sunlight and away from any direct heat source.
3. Remove the batteries when the unit will not be in use for an extended period of time.
4. Do not drop the unit on hard surfaces and do not expose the unit to moisture or water.

TROUBLESHOOTING

If for some reason the program/activity stops working, please follow these steps:

1. Please turn the unit **OFF**.
2. Interrupt the power supply by removing the batteries.
3. Let the unit stand for a few minutes, then replace the batteries.
4. Turn the unit **ON**. The unit should now be ready to play again.
5. If the product still does not work, replace with a new set of batteries.

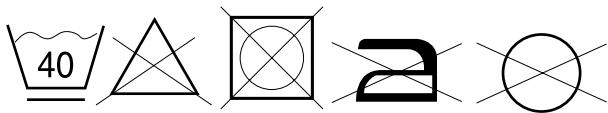
If the problem persists, please call our Consumer Services Department on 01235 546810 (from UK) or +44 1235 546810 (outside UK), and a service representative will be happy to help you.

IMPORTANT NOTE:

Creating and developing VTech® products is accompanied by a responsibility that we take very seriously. We make every effort to ensure the accuracy of the information, which forms the value of our products. However, errors sometimes can occur. It is important for you to know that we stand behind our products and encourage you to call our Consumer Services Department on 01235 546810 (from UK) or +44 1235 546810 (outside UK), with any problems and/or suggestions that you might have. A service representative will be happy to help you.



CLASS 1
LED PRODUCT





PRODUCT WARRANTY



Thank you for choosing this quality product from VTech. We hope it will bring many hours of entertainment, imaginative play and learning.

1. The product detailed above is covered by a one year warranty from the date of purchase, against any defects in materials or workmanship.
2. The product may be returned to the place of purchase. Alternatively the product can be returned to VTech Electronics Europe plc (see address below), with proof of purchase, without proof of purchase no replacement will be provided.
3. VTech Electronics Europe plc will examine the product and if it is found to be defective due to faulty materials or workmanship, will replace the product at their discretion.
4. If the product covered by this warranty is damaged due to misuse, modification or unauthorised repair, or because of faulty batteries, battery discharge or incorrect electrical connections, then this warranty becomes void.
5. This warranty is personal to the original purchaser and is not transferable.
6. Breakages to the LCD screen are not covered by the warranty.
7. Returns to VTech Electronics Europe plc should include a cheque or postal order for £1.50 towards the cost of return postage and packaging.
8. Products returned to VTech Electronics Europe plc, should be addressed as follows and packed carefully to avoid damage in transit (Please do not include batteries or adaptor).
Please include details of the fault together with your name and address.

VTech Electronics Europe plc, c/o Tablogix Limited, 200 Milton Park, Abingdon, Oxon OX14 4TA

THIS WARRANTY IS OFFERED AS AN EXTRA BENEFIT AND DOES NOT AFFECT CONSUMERS' STATUTORY RIGHTS.

This warranty is valid for the UK and Eire only. For products purchased outside the UK and Eire, please contact your local distributor or place of purchase.

Join the VTech club online at www.vtech.co.uk

